

Contents

Regular features

<i>Birthdays</i>	<i>17</i>
<i>Clerk's Corner.....</i>	<i>9</i>
<i>Deacons</i>	<i>10</i>
<i>FAQs.....</i>	<i></i>
<i>Pastor's Message.....</i>	<i>3</i>
<i>Scriptures/Sermons.....</i>	<i>5</i>
<i>Thanks.....</i>	<i>8</i>

Committees & Groups

<i>Ministry to the Community.....</i>	<i>12</i>
<i>Faith Feeds Garden</i>	<i>16</i>
<i>Giving.....</i>	<i>13</i>
<i>Mission News</i>	<i>12</i>
<i>Ripple Church.....</i>	<i>16</i>
<i>Work Camp.....</i>	<i>14</i>

<i>Ministry to the Congregation....</i>	<i>18</i>
<i>SMT Schedule.....</i>	<i>19</i>
<i>Youth Group.....</i>	<i>21</i>

<i>Ministry of Support</i>	<i>24</i>
<i>Financials.....</i>	<i>25</i>
<i>Your Offering at Work</i>	<i>26</i>

Special Features

<i>Caring Bingo</i>	<i>6</i>
<i>Easter Breakfast.....</i>	<i>7</i>
<i>Easter Egg Hunt.....</i>	<i>7</i>
<i>Work Camp Reunion</i>	<i>14</i>
<i>Yard Sale</i>	<i>16</i>



INSIDE THIS ISSUE

Church Clean-up Day – See how you can contribute to this effort— **pg. 26**

Easter/Lenten Plans – What is planned besides worship services?— **pp. 3-6**

Easter Flowers – The deadline is fairly close! Order form— **pg. 11**

Hockey Event – Enjoy fellowship at the Rink— **pg. 20**

Work Camp Reunion – Did you attend or contribute to work camp? Read more about this event! — **pg. 14**

The quarterly newsletter is always full of interesting and important information. Please take the time to read the articles the ministry leaders have shared.

Church Staff

Pastor

Rev. Rebecca Mallozzi

Clerk of Session

Ann Lowell

Moderator of Deacons

Yvonne Stauffer

Music Director

John Shilanskas

Youth Director

Rev. Joanne Marchetto

Admin. Asst., Bookkeeper, Faith Flyer Ed.

Lynda Scheirer

Custodian

Joan Decker

Church Officers

Elders

Heather Davis, Terry Eck, John Gill,
Sally Heimbach, Andy Ingram, Ann Lowell,
Janie Slamon

Deacons

Carolyn Benner, Doug Boyd, Donna Call,
Eleanor DePhillips, Tracey Gill,
Anne Laubach, Jana Masenheimer,
Pam Mongi, Yvonne Stauffer

Contact Us!

Phone: 610-967-5600

Fax: 610-928-5600

office@faithchurchemmaus.org

Find us on **Facebook** at

Faith Presbyterian Church Emmaus



FAQs

Sunday Worship: 10:00 a.m.

Church Office Hours

Office hours are Monday through
Thursday: 9 a.m. to noon

Pastoral Care Needs

For medical emergencies or deaths,
contact:

- Pastor Becki at
revmallozzi@faithchurchemmaus.org,
or...
- Deacon Moderator: Yvonne
Stauffer at ystauffer7@yahoo.com.

Prayer Chain Requests

Messages to be shared via the Prayer
Chain may be emailed to

prayers@faithchurchemmaus.org.

Messages, or through a form on the
Prayer Requests page of the church
website.

Please visit us on the web!

For all the latest information, audio
sermons, calendar highlights, and news,
visit us at: www.faithchurchemmaus.org

Next Newsletter Deadline: May 19

Personal Contact Information

Phone numbers and email addresses of
members are not shared in publications
that are shared online.

Zoom Links

Links to Zoom meetings are not published
in church publications, to discourage
outside interference.

A Note from the Pastor's Desk

When I was in college, I got my first GPS. It was a brick-like gray box that would talk to me and tell me where and when to turn. This was a good thing because I got lost a lot. I hated driving to new places because I was afraid I would get lost. I still get a little stressed out about driving to new places. Nowadays I use an app on my phone, though when David and I go to Vermont we sometimes have to switch to my car's GPS because the phone gets no signal (like when we visited the town where they filmed Beetlejuice). I like knowing where I am, where I'm going, how I'm going to get there, and where I'm going to park.

Some people travel really well. Others travel tolerably well, and others are terrible travelers. We all land somewhere on the spectrum. Some have a great sense of



Rev. Rebecca Mallozzi

direction. Others are like me, and God bless the people who made it possible to have the digital navigation systems.

Lent is a journey we travel each year. It tends to be a familiar journey for most of us. We know where we're going (heading to Easter), and we know how we're going to get there and how long it's going to take. We might make some pit stops along the way for special services and pack extra things we might need like devotionals.

(Continued on page 4)



Pastor's Message

(Continued from page 3)

This year is no different in terms of “the plan.” We’ll gather for worship each Sunday and read our way through scripture to the main event of our Christian faith: the death and resurrection of Jesus. Each year we vary the route a little. A change of scenery can be nice, especially when we have someone to guide us on the journey (did I mention I get lost easily? Changing scenery isn’t as fun when you get lost easily, so the guide is nice!). This year, our journey through Lent runs alongside the disciple Peter. We’ll read stories from the first time Jesus invited Peter to follow him through how Peter grew as a disciple. We will see the ways Peter struggled with his faith and maybe some of Peter’s questions are questions you’ve had about faith, too. Perhaps we’ll recognize the ways our own discipleship stories mirror Peter’s.

Using the art & poetry from the group *A Sanctified Art*, this year’s Lenten theme is “*Wandering Heart.*” It’s rooted in the song “*Come Thou*

Fount of Every Blessing” and follows Peter’s journey as a disciple. As the *A Sanctified Art* group states: “By following Peter’s journey, we watch the story of Jesus unfold through the eyes of a very normal human trying to figure it all out – just like us.”

Faith is a journey full of journeys. Sometimes the journey is comfortable and familiar, like driving to your grandparent’s house where you’ve been a thousand times. Sometimes our life of faith invites us onto a new path that is unfamiliar. However you journey through Lent this year, know that you have some good traveling buddies in your family of faith. We will journey together. Let me know when you need me to pull over (Lent does invite an occasional pause, after all). Make sure you stretch your legs and please. Roll the window down to let in some air once in a while. Don’t forget to breathe.

Yours in Christ,

Pastor Becki Mallozzi

**Confirmation & Pentecost
Sunday is May 19, 2024**

Save the Date!





**SUNDAY
MORNINGS 10 A.M.
IN-PERSON &
ONLINE!**

Scriptures and Sermons for Spring Worship*

March 3

"Praise the Mount"
Matthew 16:13-20

March 10

"I'm Fixed Upon It"
Matthew 16:21-23

March 17

"Teach Me"
Matthew 18:15-22

March 24 (Palm Sunday)

"Songs of Loudest Praise"
John 12:12-16)

March 28 Maundy Thursday 7p.m.

Prayer Stations and Communion

March 29 Good Friday 7p.m.

Tenebrae Service of Shadows

March 31 Easter Sunday 10a.m.

"Here's My Heart"
Luke 24:1-12

April 7 Holy Humor Sunday

"Now What?" (Acts 1:1-14)

April 14

"The Beautiful Gate"
Acts 3:1-10

April 21

"Founding Churches"
Acts 17:1-9

April 28

"A Church United"
1 Corinthians 10:1-18

May 5

"What Love Looks Like"
John 15:9-17

May 12

"Praying for Each Other"
John 17:6-19

**May 19 Pentecost,
Confirmation Sunday**

"Filled With Spirit"
Acts 2:1-21

May 26

"God's Word, Our Voices"
Isaiah 6:1-8

**Plans are subject to change.*

Our worship services can be watched live on YouTube, as they happen, anywhere you have an internet connection. Find the link on our website under *Media—Live Stream*, or check it out at <https://bit.ly/FPCLive>. Past services are archived and viewable at *Media—Sermons & Bulletins*.

LENTEN/HOLY WEEK ACTIVITIES



LENTEN BINGO (WITH A SURPRISE PRIZE)

We all like to play BINGO! We recently played KINDNESS BINGO during Sunday Morning Together.

SO let's play **CARING BINGO** during the Season of Lent.

There will be BINGO cards available in the Narthex. Instead of numbers, there will be "tasks" to complete. The games will go Sunday to Sunday. There will be different ways to win each week. If you get a BINGO, you will submit your card, with your name on it. For each winning card, you will receive a ticket.

These tickets will give you the opportunity to VOTE on Easter Sunday for what COLOR hair Pastor Becki will have on HOLY HUMOR SUNDAY, April 7. (This has been approved and endorsed by Pastor Becki).

So get a card and play **CARING BINGO**.



??WHAT TIME OF YEAR IS IT??

!!IT IS TIME FOR FISH BANKS!!

Fish Banks and Sharing Calendars are available in the Narthex. We will receive the Fish Banks on Palm Sunday, March 24 during worship. All proceeds will be included in our **One Great Hour of Sharing offering**. Read more about OGHS on page 13.

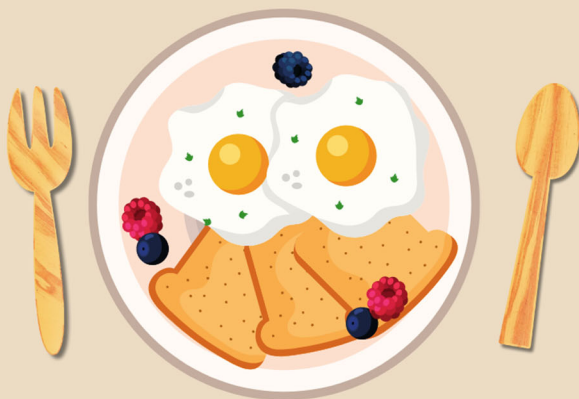


EGG HUNT

Scheduled for March 24 after Palm Sunday Worship. Come join us with your young ones for a walk and egg search at local members' yards near FPC. Call Andy Ingram for more details.

Easter Breakfast

Proceeds benefit Work Camp



Serving begins at 8:30 on Easter morning.

Please sign up on the bulletin board by Fellowship Hall.

\$10 for adults - \$5 for kids under 12.

thank you!

Give thanks in all circumstances

I Thessalonians 5:18

The words *Thank You* are two very powerful and motivating words. They let us know when we are doing things right, and that we are appreciated. They can never be overused! Whenever notes are received, we want to give our church members a chance to read them. Here are portions of what was received since the last newsletter. The full notes are hanging on the bulletin board in the hallway.

From Lehigh Conference of Churches

On behalf of the LCC, thank you for your \$5,926.42 contribution for the year of 2023, to support our neighbors in need.—Pastor Genie Watson

Through your recent gift of \$1,426.42, we can continue to offer a hot meal to those who might otherwise go without. This is only possible through the support of compassionate friends like you.—in gratitude, Christopher Clayton, Sr. Executive Chef

From Valley Youth House

Thank you for your charitable contribution of \$1,000 in support of Valley Youth House. Your generosity makes a significant difference in our ability to provide programming to young people in desperate need of our services.

Thank you for support our mission to be the catalyst for youth to achieve their desired future through genuine relationships that support families, ensure safe places, and build community connections.—Christina Shoemaker, Sr. VP

From Bethel Church

Thank you for all you and the church did for this year's Reverse Advent Calendar. What a response! Two carloads and around 450 pounds of vital food and products. Thank you for your part in living out your faith in practical ways, benefiting the people at Groceries-PLUS.—Joy Paulsen, Acquisitions Coordinator

From Sue Robinson

Thank you so much for your prayers and very generous gift for [God's] work! May his love, grace, mercy, name, be known in Emmaus and beyond.

From Cawley Waters

Thank you so much for the thoughtful letter and gift box, I really appreciate it! I hope everyone is still doing well, I would love to see everyone!

Mother Nature likes to show her face on the 2nd Tuesday of the month this year! So, Session's January meeting was on Zoom, and our February meeting was cancelled. However, much is still being accomplished! Our team has changed a bit—Doug Boyd and Bruce Luff have completed their service as Elders (Doug is a Deacon now!), and Andy Ingram and Janie Slamon have been installed. We celebrated a surplus budget for 2023, and approved the 2024 budget. Our work continues for the planning of events to educate, entertain and connect our

the CLERK'S CORNER

by Ann Lowell

congregation--all while supporting the needs of our community.

Thank you for your part--your grace and generosity--in support of our church's mission.

Highlights from our meetings are communicated in the weekly announcement e-mails, and are also posted on the bulletin board that hangs outside of Fellowship Hall.

Helping Hands Care Team

The Lehigh Presbytery Helping Hands Care Team is continuing to participate in disaster relief work projects. The HHCT has planned and participated in work trips since 2005. We invite you to become part of this opportunity.

The date for our next trip is April 6-13 2024

For information on the upcoming trip please contact Carol Bennicoff at helpinghands@lehighpresbytery.org.



DEACONS

Following to Lead | Leading to Serve

Ongoing Prayer Concerns

- Becky Shreck ● Dorothy Perrin ● Marie Heffner
- Sandy Missmer ● Heather Nicholas

Military Service



- **Robert Call**, Lt., US Army, S. Korea, grandson of Donna Call.
- **Isabel Krause**, Lt. US Navy, granddaughter of Jeff & Anita Krause.
- **Sophia Krause**, USNA Class of 2027, granddaughter of Jeff & Anita Krause
- **Victoria Krause**, Lt. US Navy, granddaughter of Jeff & Anita Krause.
- **Jack Melnick**, US Marine Corps.
- **Bella Santamaria**, Naval Academy, niece of Jim and Eleanor DePhillips

Do You Have an Extra Minute?

The Board of Deacons has identified the following members who are either confined to their homes, at a nursing facility, or sometimes unable to attend Sunday worship services:

Marie Heffner ----- Lehigh Center
 Sandy Missmer----- Home
 Barbara Newman----- Home
 Dody Perrin----- Home

If you have an extra minute, perhaps you could call, send a card or even visit one of these members. Their phone numbers and addresses are located in the Faith Directory. Be a Deacon in your own right and help make someone's day a little brighter.



Please use this form to place your order for *Easter Flowers*

_____ 6" pot White Lilies (4+blooms) @ \$14.00 ea.....\$ _____

_____ 6" pot Daffodils @ \$8.50 ea.....\$ _____

_____ 6" pot Hyacinths (3 blooms) @ \$8.50 ea.....\$ _____
Circle your color: White Blue Pink (color & amt.)

_____ 6" pot Tulips (5 blooms) @ \$8.50 ea.....\$ _____
Circle your color: Pink Purple (color & amt.)

Absolute Deadline for Orders
Sunday, March 3, 2024!

\$ _____

Total amt. enclosed

Purchaser's Name: _____

Name of person *In Memory of* or _____

Name of person *In Honor of* _____

Please make checks out to *Faith Presbyterian Church*. Write "Easter Flowers" on the memo line.

Flowers will be placed in the church on Easter and can be picked up after the worship service.

Important note: the online donation link on the church's website **may not be used** to order flowers.



Ministry to the Community News

- Over 150 cans of soup were received and donated to the Emmaus High School Angel Network this fall.
- Other mission opportunities included Ripple Church which collected donations of hand warmers and “cup of Soup” items. Charlie and Helen Underwood have been volunteering at the church, providing two meals a year during their Sunday Service at 4:00PM.
- Women of Faith raised over \$8,000 at their Craft Fair last month. 29 Vendors participated and 43 Baskets were auctioned off. All items were crafted by the Women of Faith and other contributions (like Homemade Jam) were received from friends or from our congregation. The proceeds have been designated as follows:

East Penn Neighbors Helping Neighbors	\$3,000
Angel Network-Lincoln Elementary.....	\$ 500
Angel Network-Jefferson Elementary.....	\$ 500
Angel Network—Lower Macungie Middle School.....	\$ 500
Cedarbrook Auxiliary.....	\$ 500
Turning Point.....	\$ 500
Kindness Project	\$ 500
Faith Church Deacon Fund	\$ 500
Remainder to be determined.....	\$1,500

“God has not called you to your life mission in spite of who you are; he has called you precisely because of who you are.”

—Reggie McNeal, *Practicing Greatness*

“You shouldn’t go through life with a catcher’s mitt on both hands; you need to be able to throw something back.”

—Maya Angelou



One Great Hour of Sharing:
 HUNGER – DISASTER – DEVELOPMENT
 REPAIRING THE BREACH- ISAIAH 58

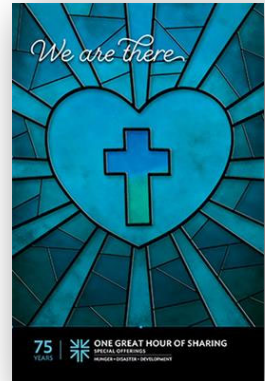
OGHs, started in **1949**, is one of the oldest ecumenical efforts in raising funds for the betterment of communities. What started as an hour-long radio appeal has evolved into the most participated Special Offering in the PCUSA. **60%** of the congregations participate and projects supported by the OGHs reach more than **100** countries.

OGHS IS THE SINGLE, LARGEST WAY THAT PRESBYTERIANS COME TOGETHER EVERY YEAR TO WORK FOR A BETTER WORLD

A gift to **One Great Hour of Sharing** enables the church to share God's love with our neighbors-in-need around the world by providing relief to those affected by natural disasters, provide food to the hungry, and helping to empower the poor and oppressed.

- Presbyterian Disaster Assistance (32% of offering)
- Presbyterian Hunger Program (36% of offering)
- Self-Development of People (32% of offering)

Faith Presbyterian Church will receive the **One Great Hour of Sharing** offering, **March 24, Palm Sunday**. In **2023** we received **\$9,661.00**. Do we think we can increase this in **2024**?



BIG, BIG THANK YOU to Faith Mission Givers!

We collected \$2,540 for the 2023 **Christmas Joy** offering. This is a \$260 increase over 2022!!! **ROCK STARS!!!**

On Super Bowl Sunday, Faith Church received \$378 for the **SOUPer Bowl of Caring**. The

Ministry to the Community committee will match those funds and will be sending the Rotary food program \$756. The donated food products will be distributed to Groceries-PLUS.

Way to go Faith mission givers!

Faith
LITTLE FREE PANTRY

*The Little Free Pantry/Little Library outside our church
Is to serve those who are hungry so they don't have to search.*

*Hours or days when food banks are open
It is there to affirm that there is hope in*

*The goodness of others.
We are, as you know, all sisters and brothers.*

*Please donate shelf stable food
Like pasta, cereal, and peanut butter; and exclude*

*Anything that is past its sell-by-date.
Jesus asks us to give 'all good gifts'—we know you can relate!*

*And books! There's a shelf for you to share or take a book
The Free Little Library is a perfect little nook.*

*But, if your books are in bags of tens and twenties
The library is the place to donate amounts like these.*

*Do unto others—keep it in mind
And find ways every day to always be kind.*

**JOIN US FOR OUR
WORK CAMP 30-ISH
YEAR REUNION EVENT!**

*** Work Camp Heroes and
their families invited!**

June 8, 2024 @ 4:00 p.m.
Faith Presbyterian Church, Emmaus

**Evening includes Gathering, Dinner,
Program, and Dessert.**

RSVP by May 8 to Lynn Ingram
484-695-9073 or lingram@ptd.net



***Work Camp Heroes:** Yes, we are inviting everyone who has ever attended work camp, but this invitation is also extended to members of Faith Church and the Barn. BUT...you must RSVP!

Have you ever wondered "Where is God?"

One place He is truly found is in the heart of the city of Allentown at Ripple Ministry. Presently, this Anabaptist-based community welcomes all in the name of Jesus at the RCI Drop-In Center at 1335 West Linden St. and at St. Stephen Outreach Center at 1421 West Turner St. Each location is a unique community where those who are on the fringes of poverty or homelessness are given hope thru relationships and compassion.

Faith Church, through the leadership of Helen and Charley Underwood and the support and resources of the Ministry to the Community committee, provided a Sunday Dinner for 60 on January 21st. The sit-down meal was prepared and served by Faith Church volunteers (Anne Laubach, Lynn Ingram, Ginny Tietjens and Helen Underwood) to Ripple congregants following Worship at 4:00 p.m. at St. Stephen's Church.

The next meal is June 16th.

Our Lord Jesus called us to serve His children and so you are invited to join in this way of service with caring and compassion. You will surely see and touch the face of God by being connected to Ripple Ministry .

For more information contact Charley or Helen Underwood.

From Helen Underwood

Below is an invitation from Pastor Angela Moyer Walter which is extended to Faith Church members. Pastor Angela previously responded after the January 21st Sunday Ripple Dinner. She commented about the Christian spirit and love shown by the Faith Church team to the homeless community when serving her congregants. It wasn't about just food but care and compassion. Pastor Angela invited our church members to visit any Sunday at 4:00 p.m. St. Stephen Lutheran Church. Our relationship with Ripple Ministry is a tribute to all being taught by Pastor Becki who sends us out to serve

An Invitation from the Ripple Church

As part of our dreaming for Ripple Church with our new building, we want to hear from our partners about the passions, hopes, and values that you have for Ripple Church. We have created the vision statement of 'Ripple Church is a transformative, community-based church for everyone'. And we'd like to hear from our partners for the aspects of Ripple that are important to you and Faith Presbyterian. Think on it and let us know!

Mark your calendars for Partner Appreciation Sunday on May 5th, 4pm. St. Stephen Lutheran Church at 1421 W. Turner St. Allentown
Angela Moyer Walter, MDiv, RIPPLE-Allentown, co-pastor



Faith Feeds Garden !!It's Soon Time to Play in the Dirt!!

The groundhog said Spring will be early this year!!

Whether the groundhog was correct or not, it is time to start the plans on the FAITH FEEDS GARDEN.

In order for us to have a successful season, we need many volunteers.

- **Planters:** people to start the process of growing our veggies
- **Waterers:** people to water the garden when needed
- **Weeders:** people to keep the weeds under control
- **Harvesters:** people to pick and clean the produce for distribution

If you would like to help in any way, please contact Sally Heimbach.

FAITH PRESBYTERIAN CHURCH



Community Yard Sale Saturday, June 1st

The Borough of Emmaus will be holding their community-wide yard sale on Saturday, June 1.

The Ministry to the Community committee will be “hosting” a yard sale in the Fellowship Hall on that day.

This will be different than the yard sales that were held in previous years. We will be “selling” space for folks to have their own table. We will also be opening up the space for community involvement.

The Ministry to the Community committee will also take donations from the congregation on Friday, May 31. The items must be pre-priced and provisions must be made to pick up unsold items Saturday after 3:00 p.m. or Sunday, June 2.

If you would like to have a table in the Fellowship Hall on that day, please contact Sally Heimbach.

***March Birthdays***

Sophia DePhillips
 Steven Eck
 Katelyn Gilpatrick
 Luana Graber
 Todd Greb
 Jack Hillman
 Jayme Ingram
 Andy Ingram
 Sadie Kennedy
 John Krissinger
 Philip Martin, Jr.
 Beth Mitchell
 Gwen Osterwald
 Helen Perry
 Keanna Pipines
 Ruth Roszitch
 Louise Schaefer
 Jeff Shreck
 Janie Slamon
 Katie Smits

April Birthdays

Jonna Boyd
 Bob Brownbridge
 Julie Garber
 Austin Godiska
 Lisa Heineman
 Michael Jackson
 James Laubach
 Carter Lowell
 Becki Mallozzi
 Zachary Mallozzi
 Pam Martin
 Barbara Newman
 Brent Schaefer
 Joe Seem
 Steve Shussett
 Yvonne Stauffer

May Birthdays

Chip Colson
 Robyn Davis
 John Gilpatrick
 Rob Haley
 Joanne Herring
 Jim Robinson
 Dick Scheirer
 Suzanne Seem
 Becky Shreck
 Christy Smits
 Bob Vitale





MTTC continues to seek meaningful ways of connecting our congregation.

In January, several church members attended an excellent home safety presentation by a certified EMT. Interaction with those in attendance helped emphasize the importance of hazard awareness and initial response to medical emergencies.

The talent show held on February 4th was a resounding success with a vast array of performances entertaining the masses to the max! Well Done to all participants!

Our Music Director is seeking young voices! A piece is planned for Easter Sunday and all children are invited to share their pipes. Please see John about the possibility of group singing after fellowship.

Each month on the first Sunday, we've gathered for a monthly potluck luncheon. There will be three more before summer. March 3, April 7, and May 5. Many thanks to Diane Policelli for planning the main courses!

Please see the next page for the remaining schedule for Sunday Morning Together before we take the summer break.

The theme for Vacation Bible School this year is rumored to be space oriented. Stay tuned, and may the biblical force be with you!

Hosting of Fellowship Hour has proven to be a great stimulator for post-worship conversation. Many thanks to those who have contributed their time and effort to this valuable task.

Upcoming events include a Phantoms Hockey game on the 3rd of March and the Easter Egg hunt on March 24th. The hunt will be a rain or shine event, with an indoor plan reserved for inclement weather.

Over the years, Faith has never shied away from a variety of ways to engage the congregation. Come join the monthly meetings on the first Monday of each month and share in the enthusiasm for fresh ideas.



SUNDAY Morning TOGETHER



Following worship

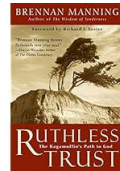
- **March 3-** Pot Luck Lunch
- **March 10-** Fellowship; Kids' Music
- **March 17** – Vision Team Event (Barnyard Activity); Kids' Music; Fellowship
- **March 24** – Palm Sunday-Egg Hunt; Fellowship
- **March 31** – Easter; Easter Breakfast
- **April 7-** Pot Luck Lunch
- **April 14-** Church Clean up Day & Lunch; Kids' Music
- **April 21-** Earth Day activities; Kids' Music; Fellowship
- **April 28-** Scavenger Hunt; Kids' Music; Fellowship
- **May 5-** Pot Luck Lunch
- **May 12-** Fellowship; Kids' Music
- **May 19-** Pentecost- Confirmation Reception; Kids' Music

Thursday Study Group

This group meets Thursdays in the homes of members from 9:30-11:30 a.m. in homes of our members for coffee, laughter, study, and prayer.

Beginning in March, our study will be the book **Ruthless Trust: The Ragamuffin's Path to God** by **Brennan Manning**

"Trust" is our gift back to God." Throughout the book, Manning identifies reasons why we may have problems trusting God and many more reasons why God is completely trustworthy.



We would welcome anyone interested to join us. Contact Anne Laubach or Deanna Robinson for more information.

Faith Presbyterian Church

WORD ON WEDNESDAY WINTER BIBLE STUDY Ezra/Nehemiah

Meets Wednesdays at noon in the parlor.



led by Pastor Becki

Enjoy Fellowship at the Rink

PHANTOMS VS BEARS

Purchase tickets at a
discounted rate for a fun
night making memories
at the PPL Center .
\$20/each

Sunday March 3rd
3:05PM

Scan Me to
Purchase Tickets



If you have a hard time opening the QR code go to
<https://fevo-enterprise.com/Faithpresbyterian5>
or ask Heather Davis for assistance



by Joanne Marchetto

We have had a busy winter at youth group! We were soaked during our sleepout for the **“One Night Without a Home”** as part of the Hunger and Homelessness Awareness Week sponsored by the Lehigh Conference of Churches. We learned the real reality of housing insecurity. We had a blast for all our winter events, especially our Christmas Party! Unfortunately, the rain kept us from Christmas caroling, but there is always next year! And a huge thank you to everyone who supported the work camp cookie sale. We appreciate all of your support!

Now that spring is here, we are getting ready for work camp! If you are interested in participating in **work camp** this summer, please let me know. Our commitment Sunday for work camp is March 17. This summer, we will be heading to **Dexter, ME June 22-30, 2024**. This will be followed by work camp Sunday on June 30, 2024. Please mark your calendars!

This spring, we have fun activities planned like game nights, bowling, and mini golf. We are also planning for the 30 Hour Famine... more information will be coming soon! This is an excellent opportunity to learn about global hunger, and the youth raise money

to support World Vision. We take 30 hours and fast to connect in compassion with the majority of young people around the world who often go 30 hours between meals.

I would like to give a huge thank you to everyone who supported youth group with a dinner this year. It is a wonderful way to show your support for our youth. Everyone joins in a family style meal from 6:30-7:00pm. Sponsors are welcome to join us for our weekly dinner together, and it is a great way to get to know the youth. We will have dinners through the spring until May 19th.

We have also had some new volunteers this year, and it has been a lot of fun! This is an awesome opportunity to get to know our youth. You might come and chaperone, or you might have a gift, skill, or talent you would like to share with them. Either way, they love it when adults join them. It is a great opportunity for them to get to know you! I created a sign-up genius so that we can have a rotating schedule of volunteers. If you would like more information, let me know. We would love for you to join us in the fun!

Photos on the next pages.

(Continued on page 22)

We have a few more months of **HS Book Club**. It meets the third Sunday of every month from 6:30-8:30 p.m. Youth group members and friends are welcome! Here is our reading schedule for HS Book Club:

March: *Aristotle and Dante Discover the Secrets of the Universe* by Benjamin Alire Saenz

April: *The Astonishing Color of After* by Emily XR Pan

May: *They Called Us Enemy* by George Takei

Middle School Youth Group is for all people in 6th through 8th grades. High School Youth Group is for those in 9th through 12th grades.

If you would like to be included in the weekly email blast which contains information about weekly events, activities, and the monthly schedule of events, please email me at: joanne@thebarnlv.org.



Baking for Cookie Sale



One Night Without a Home



Christmas Party





Ministry of Support

2024 Per Capita

You can find the blue per capita envelopes in the pew racks. Fill it out and put it in the offering plate. You can also make a per capita payment online, mail in your payment or drop it off at the church.

The per capita payment has portions sent to the Lehigh Presbytery, the Synod of the Trinity and the General Assembly to help pay for the operation expenses of those organizations.

While the payment of the per capita is included in the operating budget, Session has asked the congregation to prayerfully consider paying their per capita to assist with the budget. Please prayerfully consider doing this in 2024.

In 2024, the apportionment is **\$48.00 per member**. As of **2/20**, we have received **\$1,108.00** to go towards the church's total payment due of **\$9,936.00**.

THINGS THAT YOUR PER CAPITA SUPPORTS

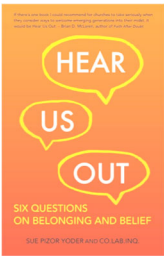
PER CAPITA CONTRIBUTIONS SUPPORT AND SUSTAIN THE WORK OF THE PRESBYTERY: THE BIG, THE SMALL, AND EVERYTHING IN BETWEEN. TOGETHER, WE ALL STRENGTHEN THE BODY OF OUR REGIONAL WITNESS.



- Resourcing to collect news of congregations' projects and events of regional interest for sharing with our congregations through the website, newsletter, and presbytery papers
- Provide for electronic participation, hardware, and tech expertise for virtual and hybrid gatherings to broaden access to participation in the life of the presbytery
- Provide for a point person to serve as advocate for emergency funds from the Board of Pensions and other agencies of the national church

Hear Us Out

The Membership Task Force of the Ministry of Support Committee would like to thank Pastor Becki for her leadership in the book review of "Hear Us Out". The study addressed the question concerning "how the church can reach out to young people today". Those participating shared dialogue and history depicting each one's Christian journey, While we did not always agree with the various authors, the material led to discussion as to how to proceed in a positive manner in trying to bring our young people back to church.



Annual Report

It has been noted that the officers listed on the inside front cover of the annual report are incorrect (clerical error). The information in the directory is correct. Thank you for your understanding.



Operating Fund Financial Report

Below is the report of operating income vs. expenses through **January 2, 2024**.

	YTD: 2024	Annual Budget
OPERATING REVENUE:	\$ 277,769.47	\$ 260,432.00
OPERATING	\$ 278,136.34	\$ 294,975.00

Respectfully submitted,
Lynda Scheirer

Giving to Faith church is easy!

You can donate via credit card or a direct transfer from your bank. Just scan this QR code with your smartphone's camera to bring up a link to our website, click the GIVE NOW button on the church website, and fill out the form. For more information about this option, please read the details about electronic giving on the [Donate](http://faithchurchemmaus.org/donate/) page of the church website: <http://faithchurchemmaus.org/donate/>



NOTE: This method of giving cannot be used for flower purchases.

April 14 following worship

Light lunch provided

The Ministry of Support and the Ministry to the Congregation will be holding a Clean-Up day on **April 14** following worship. A **light lunch** will be provided.



There will be a variety of jobs both on the inside and the outside of the building.

Please plan on participating. For additional information contact Sally Heimbach.



Your Offering Dollars at Work (January)

The Session of Faith Presbyterian Church thanks all who give to the financial support of the various ministries of the church. Here is a breakdown of how your financial support is being used.

Ministry to the Community	<u>\$ 380</u>
Meals for Daybreak (serving over 80 folks each month)	\$ 82
Ripple Church Meals	\$ 250
Faith Family Connections	\$ 48
Ministry to the Congregation	<u>\$ 11,462</u>
Staffing/Expenses (Pastor, Pulpit Supply, Music Director, Youth Director)	\$ 11,401
Worship supplies/instrument maintenance	\$ 61
Ministry of Support	<u>\$ 12,527</u>
Staffing (Administrative Asst., Custodian)	\$ 2,281
Per Capita	\$ 2,484
Administration Expenses	\$ 593
Insurance	\$ 5,957
Utilities	\$ 783
Building Expenses	\$ 400
Communication/Membership/Stewardship	\$ 29



Dates in this issue, and more!

There are always so many dates to remember. This page is intended to provide them all in one place for easy transfer to your preferred calendar, or for hanging on a refrigerator...however you manage your schedule.

Date	Event
Mar. 3.....	Pot Luck Lunch, Fellowship Event—Ice Hockey
Mar. 11.....	Daybreak Meal
Mar. 24.....	Palm Sunday, One Great Hour of Sharing, Egg Hunt
Mar. 28	Maundy Thursday
Mar. 29	Good Friday
Mar. 31.....	Easter, Breakfast
Apr. 6-13	Helping Hands Care Team mission trip
Apr. 7.....	Pot Luck Lunch
Apr. 8	Daybreak Meal
Apr. 14	Church Clean-Up Day
May 4.....	Fellowship Event—Mind Body Soul
May 5.....	Pot Luck Lunch, Ripple Church Open House
May 8.....	Work Camp Reunion RSVP deadline
May 13.....	Daybreak Meal
May 19.....	Pentecost, Confirmation Sunday
Jun. 1	Community Yard Sale
Jun. 8.....	Work Camp Reunion
Jun. 16.....	Ripple Church Meal
Jun. 17-20	Vacation Bible School
Jun. 22-30	Work Camp at Dexter, ME
Sept. 28.....	Fellowship Event—Autumn Fest

Some events are subject to change. If you are ever in doubt, refer to the online calendar for the most up to date information.



Faith Presbyterian Church
3002 N. Second Street
P.O. Box 507
Emmaus, PA 18049
Address Services Requested

A graphic for Holy Week featuring a background of colorful flowers. The text "Holy week" is written in a large, cursive font. Below it, "FAITH PRESBYTERIAN CHURCH" is written in a smaller, sans-serif font. A table lists the dates and times for the services.

<i>Holy week</i>	
FAITH PRESBYTERIAN CHURCH	
March 24 Palm Sunday	10 a.m.
March 28 Maundy Thursday	7 p.m.
March 29 Good Friday	7 p.m.
March 31 Easter	10 a.m.

The Faith Flyer

Spring 2024