

A warm welcome to all on this chilly winter morning! May you know the fire of God's love as we worship in the name of Jesus, who showed us how to love.

This worship service can be watched live on YouTube, as it happens, anywhere you have an internet connection. Additionally, past services will be archived so you can stay up-to-date or relive your favorite Sunday morning moments. You can find the link on our website or check it out at <https://bit.ly/FPClive>

Worship Assistant: Art Horst
Ushers: Pam Melchior
Deacon Greeter: Tracey Gill
Nursery: Tracey Gill

Audio: Chas Shimer
Video: Mark Ingram
Fellowship:

NOTE: Sheet music for the hymns can be found on the next page or pages.

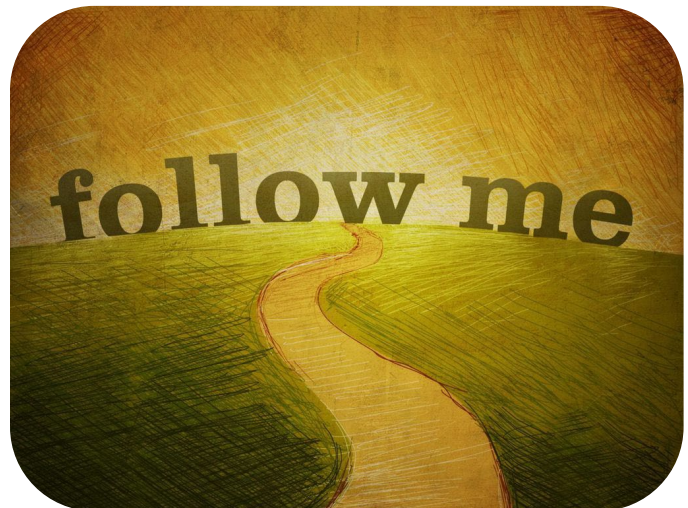


Order of Worship
January 21, 2024

Faith Presbyterian Church of Emmaus

3002 N. Second Street, PO Box 507
Emmaus, Pennsylvania 18049
610.967.5600

office@faithchurchemmaus.org
www.faithchurchemmaus.org



Here in This Place

Gather Us In

401



1 Here in this place the new light is stream-ing; now is the dark-ness
 2 We are the young, our lives are a mys-tery. We are the old who
 3 Here we will take the wine and the wa - ter; here we will take the
 4 Not in the dark of build-ings con - fin - ing, not in some heav - en,



van - ished a - way; see in this space our fears and our dream-ings
 yearn for your face. We have been sung through-out all of his - tory,
 bread of new birth. Here you shall call your sons and your daugh-ters,
 light years a - way: here in this place the new light is shin - ing;



brought here to you in the light of this day.
 called to be light to the whole hu - man race.
 call us a - new to be salt for the earth.
 now is the king - dom, and now is the day.



Gath-er us in, the lost and for - sak - en; gath-er us in, the
 Gath-er us in, the rich and the haugh-ty; gath-er us in, the
 Give us to drink the wine of com - pas-sion; give us to eat the
 Gath-er us in and hold us for - ev - er; gath-er us in and



blind and the lame; call to us now, and we shall a - wak - en;
 proud and the strong; give us a heart, so meek and so low - ly;
 bread that is you; nour-ish us well, and teach us to fash - ion
 make us your own; gath - er us in, all peo - ples to-geth - er,



we shall a - rise at the sound of our name.
 give us the cour - age to en - ter the song.
 lives that are ho - ly and hearts that are true.
 fire of love in our flesh and our bone.

The "you/your" mentioned in every stanza is never identified, but this 1979 hymn is clearly a corporate prayer to God on behalf of the diverse congregation who have assembled for worship, longing to be transformed and used as God's witnesses and for God's purposes.

**THE ORDER OF MORNING WORSHIP
THIRD SUNDAY IN ORDINARY TIME**

10:00 AM

JANUARY 21, 2024



THE FIRST NOTE OF THE PRELUDE begins our worship.
Please use the prelude time to turn your attention to God's presence and help.
Nurturing our relationships and friendships in fellowship is essential to our life
as a congregation, so please continue to do so following our time of worship.

** Those who are able are invited to stand.*

FOCUSING UPON GOD'S PRESENCE AND VOICE

PRELUDE	<i>"Ring Praises"</i>	Faithful Ringers
---------	-----------------------	------------------

WELCOME AND ANNOUNCEMENTS

***CALL TO WORSHIP**

One: From God comes my salvation.

People: For God alone my soul waits in silence.

One: God alone is my rock and my salvation.

People: God is my fortress; I shall never be shaken.

***OPENING PRAYER**

*HYMN #401	<i>"Here In This Place"</i>	<i>(Gather Us In)</i>
<i>(sheet music on prior page.)</i>		

LITANY OF AFFIRMATION

Leader: Trusting in the promise of grace, let us pour out our hearts before God.

**People: Forgiving God, we repent of all the ways we turn from you. You
call, but we do not listen; you show us your path, but we prefer
our own way. Forgive us, heal us, and lead us back to you, that
we might show mercy to others. In Jesus' name.**

Leader: Lord, in your mercy,

People: hear our prayers.

(A moment is given for silent confession to God.)

ASSURANCE OF FORGIVENESS

*HYMN OF ASSURANCE #581

GLORIA PATRI

THE WORD OF GOD TO THE CHURCH

PRAYER FOR ILLUMINATION

FIRST SCRIPTURE LESSON

PSALM 62:5-12

⁵For God alone my soul waits in silence, for my hope is from him.

⁶He alone is my rock and my salvation, my fortress; I shall not be shaken.

⁷On God rests my deliverance and my honor; my mighty rock, my refuge is in God.

⁸Trust in him at all times, O people; pour out your heart before him; God is a refuge for us. Selah

⁹Those of low estate are but a breath, those of high estate are a delusion; in the balances they go up; they are together lighter than a breath.

¹⁰Put no confidence in extortion, and set no vain hopes on robbery; if riches increase, do not set your heart on them.

¹¹Once God has spoken; twice have I heard this: that power belongs to God,

¹²and steadfast love belongs to you, O Lord. For you repay to all according to their work.

SECOND SCRIPTURE LESSON

MARK 1:14-20

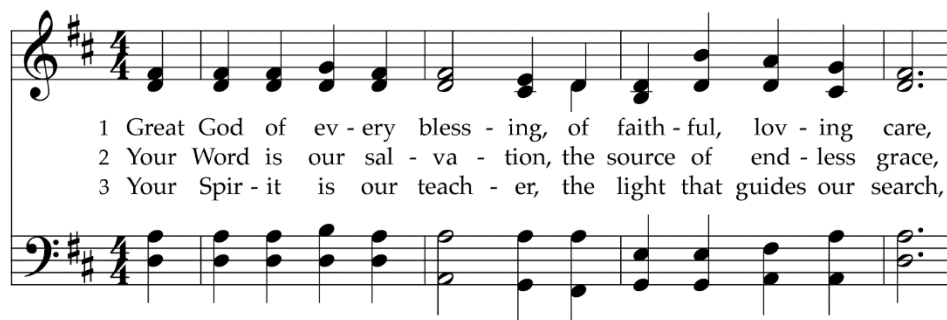
¹⁴Now after John was arrested, Jesus came to Galilee, proclaiming the good news of God, ¹⁵and saying, “The time is fulfilled, and the kingdom of God has come near; repent, and believe in the good news.” ¹⁶As Jesus passed along the Sea of Galilee, he saw Simon and his brother Andrew casting a net into the sea—for they were fishermen. ¹⁷And Jesus said to them, “Follow me and I will make you fish for people.” ¹⁸And immediately they left their nets and followed him. ¹⁹As he went a little farther, he saw James son of Zebedee and his brother John, who were in their boat mending the nets. ²⁰Immediately he called them; and they left their father Zebedee in the boat with the hired men, and followed him.

MESSAGE

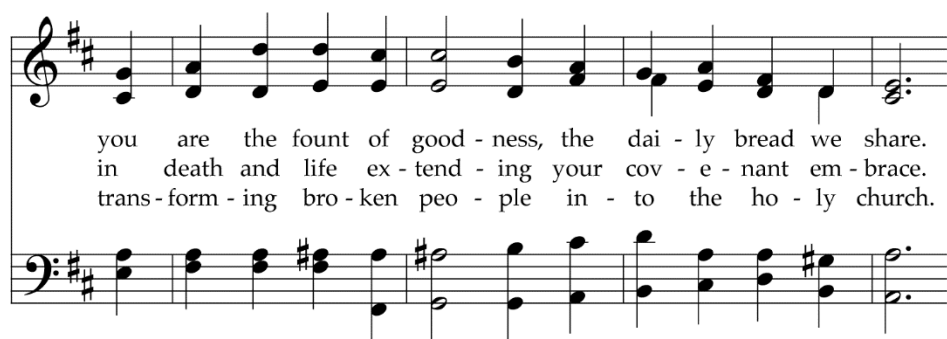
“Followers vs. Fans”

DEDICATION AND STEWARDSHIP

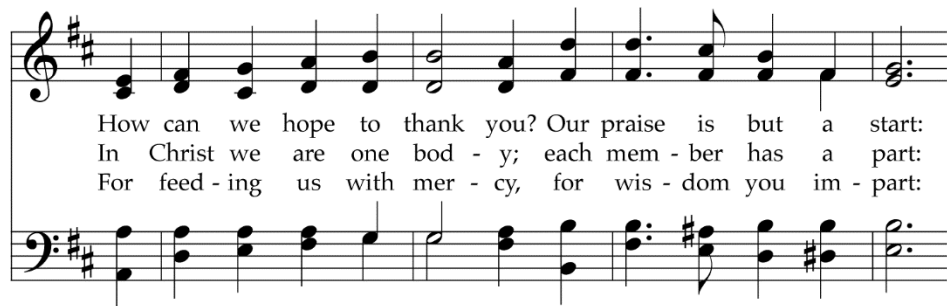
694 Great God of Every Blessing



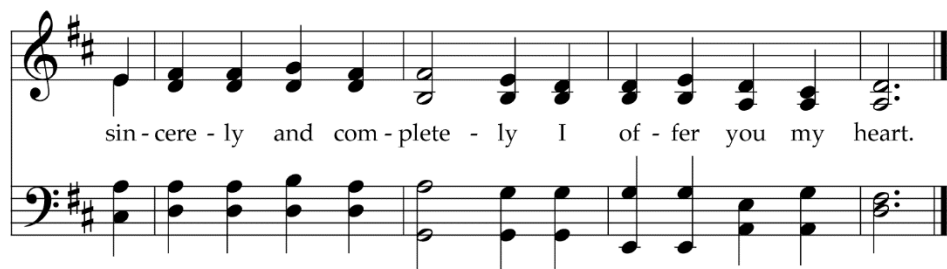
1 Great God of ev - ery bless - ing, of faith - ful, lov - ing care,
 2 Your Word is our sal - va - tion, the source of end - less grace,
 3 Your Spir - it is our teach - er, the light that guides our search,



you are the fount of good - ness, the dai - ly bread we share.
 in death and life ex - tend - ing your cov - e - nant em - brace.
 trans - form - ing bro - ken peo - ple in - to the ho - ly church.



How can we hope to thank you? Our praise is but a start:
 In Christ we are one bod - y; each mem - ber has a part:
 For feed - ing us with mer - cy, for wis - dom you im - part:



sin - cere - ly and com - plete - ly I of - fer you my heart.

Written for the 500th anniversary of John Calvin's birth, this text sums up his liturgical theology, ending each stanza with his motto: *Cor meum tibi offero, Domine, prompte et sincere*. By moving from plural to singular the stanzas show how corporate faith becomes personal piety.

TEXT: David Gambrell, 2009

MUSIC: Samuel Sebastian Wesley, 1864

Text © 2011 David Gambrell (admin. Presbyterian Publishing Corp.)

AURELIA

7.6.7.6.D

SHARING JOYS & CONCERNS
INTERCESSIONS AND PETITIONS
THE LORD'S PRAYER

GLORY TO GOD HYMNAL – PG. 35
(Please use “debts & debtors.”)

OUR RESPONSE TO GOD'S WORD

CALL FOR OFFERTORY

OFFERTORY

“Softly and Tenderly”

Faithful Ringers

*At this time, we are not passing an offering plate.
Please find the plate by the door for in-person giving.
See the back page of the bulletin for additional info on how to give.
Thank you for your generosity!*

PRAYER OF DEDICATION

*HYMN #177

“I Will Come to You”

(You Are Mine)

(sheet music on next page.)

*CHARGE & BENEDICTION

POSTLUDE

“Gigue”

Please feel free to sit and reflect during the postlude or depart and join us in Fellowship Hall.



Music Licensing Information

Prelude OneLicense.net A-713988

Hymn #401 OneLicense.net A-713988

Hymn #694 CCLI 1695793

Offertory arr. Judy Hunnicutt, CCLI 1695793

Hymn #177 OneLicense.net A-713988

Postlude Douglas E. Wagner, OneLicense.net A-713988

I Will Come to You

You Are Mine

Leader or All

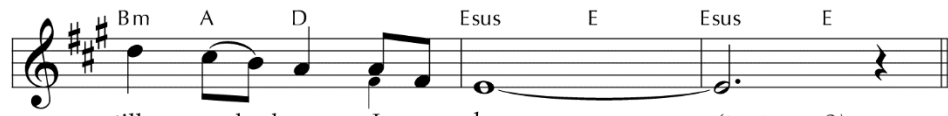
- 1 "I will come to you in the si - lence;
 2 "I am hope for all who are hope - less;
 3 "I am strength for all the de - spair - ing,
 (4) am the Word that leads all to free - dom; I



I will lift you from all your fear.
 I am eyes for all who long to see. (2) In the
 heal - ing for the ones who dwell in shame.
 am the peace the world can - not give.



You will hear my voice; I claim you as my choice. Be
 shad - ows of the night, I will be your light.
 All the blind will see; the lame will all run free, and
 I will call your name, em - brac - ing all your pain. Stand



still and know I am here. (to stanza 2)
 Come and rest in me. (to Refrain)
 all will know my name. (to Refrain)
 up, now walk and live! (to Refrain)



Do not be a - fraid, I am with you. I have called you each by



name. Come and fol - low me, I will bring you home; I



love you and you are mine." 4 "I

Presuming to speak in the voice of God, as this song does, can only be done with integrity if the singers understand their words as an expression of what they believe about God's nature and God's intentions. It is an occasion for affirming faith, not for wishful thinking.

Faith Life

SUNDAY, JANUARY 21, 2024

We hope you'll join us following worship for beverages, snacks, and fellowship.

SUNDAY
Morning
TOGETHER

• **TODAY:** Learn about Fire Safety and First Aid with guest speaker, Earl Ostrander, EMT. Fellowship Time. Kids' Music

• **January 28:** Please attend our Annual Congregational Meeting along with Fellowship Time. Kids' Music

See the back of this page for a list of SMT's future Sunday and mid-week events. Youth Group News is also on the next page!



TALENT SHOW: FEBRUARY 4

Sign up to participate in our upcoming talent show!

- ☆ Share a **SIGHT**; crafts or hobbies you enjoy and can be placed on a table to see.
- ☆ Share a **SOUND**; something to be heard and/or performed on a stage.
- ☆ **"S" FOODS** don't need to be signed up for, but please bring a dish to share for lunch that starts with the letter S. If your last name begins with A-K bring a side dish that starts with the letter S, and L-Z bring something sweet.

Sign up by speaking with Heather Davis, or on the whiteboard in Fellowship Hall. You can also scan this QR code with your phone's camera to use our Sign-Up Genius.



DONATIONS NEEDED!

It will soon be time for the deacons to be mailing goodie boxes to our college students, and they rely on donations to make the boxes a success! Things like hot chocolate packets, granola bars, cookies, gum, candy, etc.

The deacons will have a box for your donations in the narthex or Fellowship Hall. Thank you in advance for your help in putting together a special gift to our college students.

KNOW THYSELF

In the midst of cold and flu season (and whatever else might be going around), remember to pay attention to how you are feeling and who is around you. Stay home if you aren't feeling well. Listen to your body and get rest when you need it. Masks are not required, but are welcomed for anyone who might feel more comfortable with a mask, or anyone who might be feeling even a little under the weather. We can love our neighbors as we love ourselves when we take consideration for everyone's physical health!

2024 CHURCH DIRECTORY

Please check the table in the narthex and grab a copy of the directory! As is our custom, please take only one per household. Church officers...you will find a copy in your mailbox in the office for use in your service to the church.



Every effort was made to have the most up to date information. However there are always changes after printing. Please reach out to the office admin if you have any corrections or changes. Thanks!

Annual Congregational Meeting

January 28, 2024 - following worship

Copies of the Annual Report can be found on the table in the narthex. Please take one home to read prior to next week's meeting.

Weekly Volunteers Needed!
Please see Page 3 for details.

FAITH PRESBYTERIAN CHURCH OF EMMAUS

3002 N. Second Street - PO Box 507 - Emmaus, PA 18049
610-967-5600—office@faithchurchemmaus.org
Visit us on the web! www.faithchurchemmaus.org

CHURCH OFFICE HOURS

Monday - Thursday from 9:00 AM to Noon.
Closed on Fridays.



Sunday Morning Together brings our church family together for fellowship and special activities. Most activities take place right after worship. Children of God of all ages are welcome!

- 2/4 First Sunday Luncheon
- 2/11 Fastnacht
- 2/18 Fellowship
- 2/25 Pretzels & Lent Fellowship
- 3/3 First Sunday Luncheon & Ice Hockey
- 3/10 Fellowship
- 3/17 Vision Team Event
- 3/24 Palm Sunday- Egg Hunt
- 3/31 Easter; Easter Breakfast
- 4/7 First Sunday Luncheon
- 4/14 Church Clean-up Day & Lunch
- 4/21 Earth Day Clean
- 4/28 Scavenger Hunt
- 5/5 First Sunday Luncheon
- 5/12 Fellowship
- 5/19 Pentecost- Confirmation Reception

YOUTH GROUP NEED

Pastor Jo Marchetto, our Youth Group Director, could use some help from us here at FPC. **At times, an adult or two are needed to assist in the Youth Group activity, program.** No experience is needed or special skills, just a genuine interest in our youth. The commitment can be flexible. Why not give Pastor Jo a call (phone number is in the directory) and find out what it's all about. You will be greatly appreciated! THANK YOU!



HOW CAN YOU SUPPORT OUR YOUTH?

Sponsoring a meal for our Youth Groups is a very beneficial and easy way to show your support for our youth. (For a rewarding experience, consider joining them for the meal and getting to know them better.) It's easy - scan the QR code to schedule/sponsor your meal, or you can call Pastor Jo Marchetto, our Youth Director. What a wonderful way to show interest in and support our youth! Thank you.

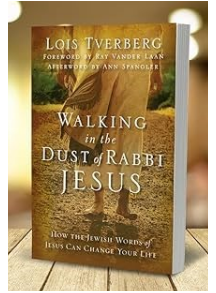


THURSDAY WOMEN'S STUDY GROUP

This group meets Thursday mornings, 9:30-11:30 a.m. in homes of our members for coffee, study, prayer and laughter.

We are continuing our study on "Walking in the Dust of Rabbi Jesus," and will begin a new study (TBA) in February.

Interested? Contact Anne Laubach or Deanna Robinson.



Faith Presbyterian Church

WORD ON WEDNESDAY

WINTER BIBLE STUDY

Ezra/Nehemiah

Starting January 17 | Meet at noon in the parlor on Wednesdays. All are welcome!

led by Pastor Becki

BOOK Study

Want to talk about how the church can reach out to young people today? Join Us for the study of "Hear Us Out: Six Questions on Belonging and Belief"

JANUARY 6 AND 22

7:00-8:30P.M.

IN PERSON AND ZOOM

Read the book, then come discuss! Zoom link available in church weekly email starting Jan 7. If you need help getting the book, let Pastor Becki know! We'll cover Chapters 1-3 on Jan 8 and Chapters 4-6 on Jan 22

HEAR US OUT

SIX QUESTIONS ON BELONGING AND BELIEF

SUE PIZOR YODER AND COLLAB. INQ.

Zoom link to join: <https://bit.ly/FPCbookstudy24>



HOSTED BY EMMAUS MORAVIAN CHURCH
146 MAIN STREET, EMMAUS

SPAGHETTI DINNER FUNDRAISER

Feb 10, 2024

5 P.M. &
7 P.M.

**TICKET
SUGGESTED
DONATION:**
\$10 IN
ADVANCE,
\$15 AT THE
DOOR
KIDS 2 AND
UNDER ARE
FREE!

TO ORDER TICKETS
CALL:
EMMAUS MORAVIAN CHURCH
610.965.6067 OR
FAITH PRESBYTERIAN
CHURCH 610.967.5600

For Faith Church members or friends wanting tickets,
please speak with Pastor Becki or Lynn Ingram.

Follow Us on Social Media

Let's get connected for
Our Latest News,
Events and Updates



Public Facebook Page @faithchurchemmaus,
Private Group for members & friends @groups/32770546126.

Faith
PRESBYTERIAN CHURCH



PRESBYTERIAN DISASTER ASSISTANCE

Scan this QR code to donate to aid disaster relief, or
send a check with PDA in the memo line, mail to:

Presbyterian Disaster c/o
Presbyterian Church (U.S.A.)
P.O. Box 643700
Pittsburgh, PA 15264-3700



HELP NEEDED FOR THE RIPPLE CHURCH MEAL TODAY



Charley and Helen Underwood are
coordinating a meal for the homeless at the Ripple Church,
1421 Turner Street in Allentown today.

They could use several people to help serve the meal at 4
p.m. They are also looking for donations of cookies and
boxed drinks.

Please contact Helen if you can help serve or are able to
donate cookies or boxed drinks.

WORSHIP ASSISTANTS NEEDED

You might think that assisting during worship is
a bit daunting, but it is easier than you think!
Spoon-fed instructions are provided, with all the
necessary materials. Everything is prepared for
you! Yet, as easy as it is, volunteers are always
needed. Here are the dates where a worship
assistant is needed:

Worship
Assistants

February 4, 18, 25

Contact Sally Heimbach, or use this link to the
SignUpGenius: <https://bit.ly/3FCW8iO> Thank you.

FELLOWSHIP HOSTS NEEDED

Everybody loves fellowship time following
worship. It's a wonderful time to catch up with
your church family! Hosting is easy and
instructions are provided, but we still need
people to volunteer. Here are the dates where hosts are
needed:



January 28, February 18

Sign up on the whiteboard in the narthex, or contact
Heather Davis. Thank you.

THE NURSERY NEEDS YOU!

We are looking for volunteers for the
nursery during the worship time. If you do
not have your clearances, we can assist
you in obtaining them. Here are the dates
where volunteers are needed:



February 18, 25

Sign up on the whiteboard in the narthex, or see Sally
Heimbach. Helpers will need their clearances. Thank you.

PER CAPITA UPDATE

The per capita payment has portions
sent to the Lehigh Presbytery, the Synod
of the Trinity and the General Assembly to
help pay for the operation expenses of
those organizations.

per
capita

The apportionment for 2024 is \$48.00 per member.

You can pay your per capita online, or by check
made out to Faith Presbyterian Church. Thank you!

TWO WEEKS OF FAITH

This calendar is prepared on the Thursday prior to distribution.
Please see the church [website](#) for the most up-to-date information.

Key	
BR	Brick Room
FH	Fellowship Hall
MR	Music Room
P	Parlor
S	Sanctuary
Z	Zoom

THIS WEEK

Sunday, January 21

10:00 a.m.— Worship Service
11:00 a.m.— Sunday Morning Together
5:00 p.m.— MS Youth Group
6:30 p.m.— HS Youth Group Book Club

Monday, January 22

7:00 p.m.— Book Study (in person & Zoom)

Tuesday, January 23

Wednesday, January 24

Noon— WOW Bible Study (P)
5:30 p.m.— Faithful Ringers rehearsal (MR)
7:00 p.m.— Faithful Harmonizers rehearsal (S)

Thursday, January 25

Friday, January 26

Church Office Closed

Saturday, January 27

9:00 a.m.— Zumba (FH)
10:30 a.m.— Outside Use snow date (FH)

NEXT WEEK

Sunday, January 28

Annual Congregational Meeting

10:00 a.m.— Worship Service
11:00 a.m.— Sunday Morning Together
5:00 p.m.— MS Youth Group
6:30 p.m.— HS Youth Group

Monday, January 29

Tuesday, January 30

Wednesday, January 31

Noon— WOW Bible Study (P)
5:30 p.m.— Faithful Ringers rehearsal (MR)
7:00 p.m.— Faithful Harmonizers rehearsal (S)

Thursday, February 1

Friday, February 2

Church Office Closed

Saturday, February 3

9:00 a.m.— Zumba (FH)
10:00 a.m.— Crazy Quilters (FH)

Offering envelopes for 2024 can be found on the table in the narthex. Please see the note accompanying them for details.



SNOW CANCELLATION POLICY

If it snows sufficiently to make you wonder if worship will be held, we will post the cancellation information on WFMZ: (<https://www.wfmz.com/weather/stormcenter/>).



2024 Per Capita—\$48.00
Daybreak - February 12
Spring Flyer deadline—February 18

ARE YOU GETTING THE INFO YOU NEED?

Faith Church has four email lists. Are you interested in being added to one or more of them? Please indicate your interest, add your email address, tear off this tab, and drop in the offering plate.

- ☐ Weekly Announcements ☐ Quarterly Newsletter
☐ Prayer Chain ☐ Emergency Alerts

Name & email: _____

Looking Ahead

Mark Your Calendars!

Feb. 4Pot Luck Luncheon, Talent Show
Feb. 23Youth Group 30-Hour Famine
Mar. 3Pot Luck Luncheon
 Phantoms Hockey Game
Apr. 7Pot Luck Luncheon
Apr. 14Church Clean-Up Day
May 4Fellowship Event—Mind Body Soul
May 5Pot Luck Luncheon
Jun. 17-20.....Vacation Bible School
Jun. 22-30Work Camp at Dexter, ME
Sept. 28Fellowship Event—Autumn Fest