

Welcome to worship. God has been, and is, our dwelling place “from everlasting to everlasting” (Psalm 90:1-2). Let us praise God, our eternal home, together.

This worship service can be watched live on YouTube, as it happens, anywhere you have an internet connection. Additionally, past services will be archived so you can stay up-to-date or relive your favorite Sunday morning moments. You can find the link on our website or check it out at <https://bit.ly/FPCLive>

Worship Assistant: Tim Bagnall
Usher: Liz Kenny
Deacon Greeter: Yvonne Stauffer
Nursery: Michael Davis

Audio: Tracey Gill
Video: David Mallozzi
Fellowship: Luncheon & Clean Up Day

NOTE: Sheet music for the hymns can be found on the next page or pages.

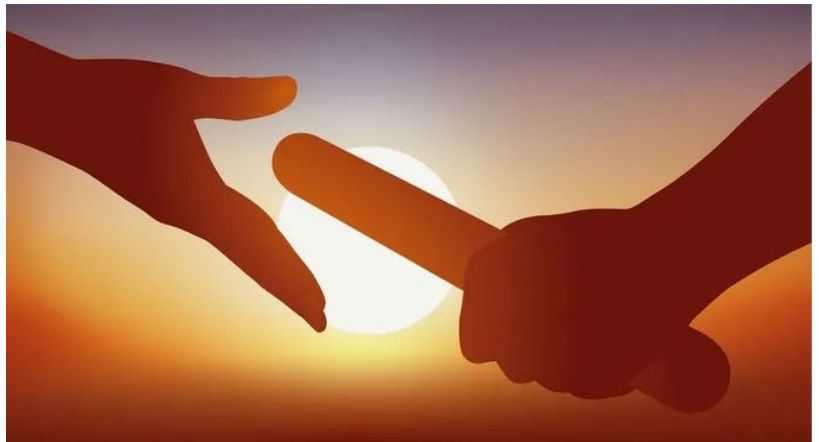


Order of Worship
October 29, 2023

Faith Presbyterian Church of Emmaus

3002 N. Second Street, PO Box 507
Emmaus, Pennsylvania 18049
610.967.5600

office@faithchurchemmaus.org
www.faithchurchemmaus.org



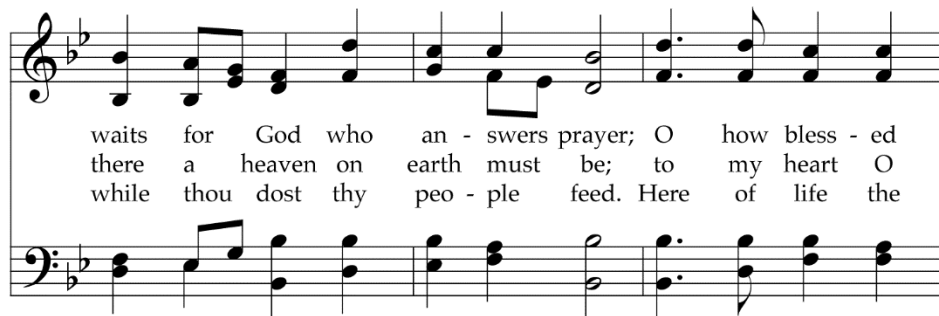
Open Now Thy Gates of Beauty 403



1 O - pen now thy gates of beau - ty, Zi - on, let me
 2 Gra - cious God, I come be - fore thee; come thou al - so
 3 Speak, O Lord, and I will hear thee; let thy will be



en - ter there, where my soul in joy - ful du - ty
 un - to me; where we find thee and a - dore thee,
 done in - deed; may I un - dis - turbed draw near thee,



waits for God who an - swers prayer; O how bless - ed
 there a heaven on earth must be; to my heart O
 while thou dost thy peo - ple feed. Here of life the



is this place, filled with so - lace, light, and grace.
 en - ter thou; let it be thy tem - ple now.
 foun - tain flows; here is balm for all our woes.

In the first stanza "Zion" is not a general synonym for Jerusalem but a reference to the part of the city where the Temple stood. It prepares the way for the interior temple of the heart in stanza two. The pre-existing tune is by a prominent German Reformed hymnwriter.

***THE ORDER OF MORNING WORSHIP
21ST SUNDAY IN ORDINARY TIME***

10:00 AM

OCTOBER 29, 2023



THE FIRST NOTE OF THE PRELUDE begins our worship.

Please use the prelude time to turn your attention to God's presence and help. Nurturing our relationships and friendships in fellowship is essential to our life as a congregation, so please continue to do so following our time of worship.

** Those who are able are invited to stand.*

FOCUSING UPON GOD'S PRESENCE AND VOICE

PRELUDE *"A Quiet Moment"*

WELCOME AND ANNOUNCEMENTS

***CALL TO WORSHIP**

Leader: O give thanks to the Lord, who is good. God's steadfast love endures forever! Let the redeemed of the Lord say so.

People: **God's steadfast love endures forever.**

***OPENING PRAYER**

***HYMN #403** *"Open Now Thy Gates of Beauty"*
(sheet music on prior page)

LITANY OF AFFIRMATION

Leader: God turns the desert into pools of water and guides those who have gone astray. Let us confess to God the depth of our need, that we may be saved from trouble.

People: Lord God, only you are holy. Yet we imagine that we are righteous, excusing our own faults while pointing out those of others. We are quick to lay burdens upon our neighbors but slow to help with their own. We take credit and give blame. In spite of the grace you have shown to us, we are slow to show mercy. Forgive us, O God, and wash us clean, that we may serve you with joy and thanksgiving.

Leader: Lord, in your mercy,

People: hear our prayers.

(A moment is given for silent confession to God.)

ASSURANCE OF FORGIVENESS

*SHARING THE PEACE

Leader: Since God has forgiven us, let us also forgive one another.
The peace of our Lord Jesus Christ be with you all.

People: And also with you.

Leader: Let us share our forgiven joy with one another.

*HYMN OF ASSURANCE #581

GLORIA PATRI

THE WORD OF GOD TO THE CHURCH

PRAYER FOR ILLUMINATION

FIRST SCRIPTURE LESSON

PSALM 90:1-6, 13-17

¹Lord, you have been our dwelling place in all generations.

²Before the mountains were brought forth, or ever you had formed the earth and the world, from everlasting to everlasting you are God.

³You turn us back to dust, and say, "Turn back, you mortals."

⁴For a thousand years in your sight are like yesterday when it is past, or like a watch in the night.

⁵You sweep them away; they are like a dream, like grass that is renewed in the morning;

⁶In the morning it flourishes and is renewed; in the evening it fades and withers.

¹³Turn, O LORD! How long? Have compassion on your servants!

¹⁴Satisfy us in the morning with your steadfast love, so that we may rejoice and be glad all our days.

¹⁵Make us glad as many days as you have afflicted us, and as many years as we have seen evil.

¹⁶Let your work be manifest to your servants, and your glorious power to their children.

¹⁷Let the favor of the Lord our God be upon us, and prosper for us the work of our hands— O prosper the work of our hands!

SECOND SCRIPTURE LESSON

DEUTERONOMY 34:1-12

³⁴Then Moses went up from the plains of Moab to Mount Nebo, to the top of Pisgah, which is opposite Jericho, and the LORD showed him the whole land: Gilead as far as Dan, ²all Naphtali, the land of Ephraim and Manasseh, all the land of Judah as far as the Western Sea, ³the Negeb, and the Plain—that is, the valley of Jericho, the city of palm trees—as far as Zoar. ⁴The LORD said to him, “This is the land of which I swore to Abraham, to Isaac, and to Jacob, saying, ‘I will give it to your descendants’; I have let you see it with your eyes, but you shall not cross over there.”

⁵Then Moses, the servant of the LORD, died there in the land of Moab, at the Lord’s command. ⁶He was buried in a valley in the land of Moab, opposite Beth-peor, but no one knows his burial place to this day. ⁷Moses was one hundred twenty years old when he died; his sight was unimpaired and his vigor had not abated. ⁸The Israelites wept for Moses in the plains of Moab thirty days; then the period of mourning for Moses was ended.

⁹Joshua son of Nun was full of the spirit of wisdom, because Moses had laid his hands on him; and the Israelites obeyed him, doing as the LORD had commanded Moses. ¹⁰Never since has there arisen a prophet in Israel like Moses, whom the LORD knew face to face. ¹¹He was unequalled for all the signs and wonders that the LORD sent him to perform in the land of Egypt, against Pharaoh and all his servants and his entire land, ¹²and for all the mighty deeds and all the terrifying displays of power that Moses performed in the sight of all Israel.

MESSAGE

“Passing the Baton”

*HYMN #749

“Come! Live in the Light”

(Sheet music on next page)

749 Come! Live in the Light!

We Are Called

G C D G

1 Come! Live in the light! Shine with the
 2 Come! O - pen your heart! Show your
 3 Sing! Sing a new song! Sing of that

C D Em

joy and the love of the Lord! We are called
 mer - cy to all those in fear! We are called
 great day when all will be one! God will reign,

Em7 C G Am7

to be light for the king - dom, to live in the
 to be hope for the hope - less so ha - tred and
 and we'll walk with each oth - er as sis - ters and

G C Dsus D

free - dom of the cit - y of God.
 vio - lence will be no more.
 broth - ers u - nit - ed in love.

Refrain G C D C D G C

We are called to act with jus - tice; we are called to

D Em Em7 C D

love ten - der - ly; we are called to serve one an -

C D G C D C G

oth - er, to walk hum - bly with God.

The thematic and musical center of this hymn on the vocation of all believers is found in the refrain, which is based on the well-known challenge of Micah 6:8, "What does the Lord require of you but to do justice, and to love kindness, and to walk humbly with your God?"

TEXT and MUSIC: David Haas, 1988
 Text and Music © 1988 GIA Publications, Inc.

WE ARE CALLED
 Irregular

SHARING JOYS & CONCERNS

INTERCESSIONS AND PETITIONS

THE LORD'S PRAYER (Please use "debts & debtors".)

GLORY TO GOD HYMNAL – PG. 35

OUR RESPONSE TO GOD'S WORD

CALL FOR OFFERTORY

OFFERTORY

"Praise Ye the Lord, the Almighty"

Hymn #35, Sung by the Congregation.

CREATION AND PROVIDENCE

35 Praise Ye the Lord, the Almighty

1 Praise ye the Lord, the Al-might-y, the King of cre -
2 Praise ye the Lord, who o'er all things so won-drous-ly
3 Praise ye the Lord! O let all that is in me a -

a - tion! O my soul, praise him, for he is thy
reign - eth, shel-ters thee un - der his wings, yea, so
dore him! All that hath life and breath, come now with

health and sal - va - tion! All ye who hear, now to his
gen - ly sus - tain - eth! Hast thou not seen how thy de -
prais - es be - fore him! Let the a - men sound from his

tem - ple draw near; join me in glad ad - o - ra - tion!
sires e'er have been grant - ed in what he or - dain - eth?
peo - ple a - gain; glad - ly for aye we a - dore him.

At this time, we are not passing an offering plate. Please find the plate by the door for in-person giving. See the back page of the bulletin for additional info on how to give. Thank you for your generosity!

PRAYER OF DEDICATION

*HYMN #700

"I'm Gonna Live So God Can Use Me"

(Sheet music on next page)

*CHARGE & BENEDICTION

POSTLUDE

"A Mighty Fortress Is Our God"

Please feel free to sit and reflect during the postlude or depart and join us in Fellowship Hall.

Music Licensing Information

Prelude David Lasky, OneLicense.net A-713988

Hymn #403 Public Domain

Hymn #749 OneLicense.net A-713988

Offertory Hymn #35, Public Domain

Hymn #700 Music Arr. © Estate of Wendell P. Whalum (admin. Morehouse College). Used by permission.

Postlude Mairanne Kim, OneLicense.net A-713988

DEDICATION AND STEWARDSHIP

700 I'm Gonna Live So God Can Use Me

1 I'm gon-na live so (live so)
2 I'm gon-na work so (work so) God can use me an - y -
3 I'm gon-na pray so (pray so)
4 I'm gon-na sing so (sing so)

where, Lord, an - y - time! (an - y - time!) I'm gon-na
I'm gon-na
I'm gon-na
I'm gon-na

live so (live so)
work so (work so) God can use me an - y -
pray so (pray so)
sing so (sing so)

where, Lord, an - y - time! (an - y - time!)
(my Lord,)

Faith Life

SUNDAY, OCTOBER 29, 2023

We hope you'll join us following worship for
a light lunch and fellowship.
Can you lend a hand with Clean Up Day?

SUNDAY
Morning
TOGETHER

- **TODAY:** Today, let's all help with the "Clean Up" our Church after Worship and a light lunch.



- **November 5:** Enjoy the monthly potluck luncheon with fellow members and friends.

POT LUCK LUNCHEON

Next Sunday, following worship, we will gather together for our **Pot Luck Luncheon**. The Ministry to the Congregation Committee invites all to attend! The main course is **Chicken Pot Pie**. They ask church members to please bring the following. If your name begins with...



- A-L..... please bring a side dish.
M-Z..... please bring a dessert.

See the back of this page for a list of SMT's future Sunday and mid-week events.

Youth Group News is also on the next page!

POINSETTIA ORDERS...ALREADY?!



Yes! Although Christmas is weeks and weeks away, it is time to consider purchasing a poinsettia or two to decorate the sanctuary for our Christmas Eve service. Plants will all be in 6" pots and are priced at \$7.00 ea. Envelopes for ordering are in the pews, and order forms will be included in the email blast and on the Facebook group page. Please

check off the color you would like, and be clear about the dedication *in memory* or *in honor* of someone.

To get the plants ordered from the supplier in time, **your orders must be turned in and paid for by Tuesday, November 21.** Please be advised that orders **may not** be placed using our online giving site.

Please see Page 3 for information on some new Mission Opportunities!

STEWARDSHIP SUNDAY

Today we dedicate our 2024 financial pledges to the church. There are pledge cards in the pews, in addition to the one mailed to you. As of 10/24/2023 we have received **21 pledges totaling \$64,794.00.**



Or go to this link: <https://faithchurchemmaus.org/donate/>

FROM THE CROP WALK TEAM



Faith Presby. Emmaus crop walkers wish to thank FPC members, friends, and our Ministry To The Community for your enthusiastic commitment and contributions toward CROP Hunger Walk.

Eleven of us walked last Sunday afternoon to help bring attention to world hunger. Unofficially, the team raised \$1,950. **Thank You** again for your support! See you again next year.



Please see Page 3 for details.



FAITH PRESBYTERIAN CHURCH OF EMMAUS

3002 N. Second Street - PO Box 507 - Emmaus, PA 18049
610-967-5600—office@faithchurchemmaus.org
Visit us on the web! www.faithchurchemmaus.org

CHURCH OFFICE HOURS

Monday - Thursday from 9:00 AM to Noon.
Closed on Fridays.



Sunday Morning Together brings our church family together for fellowship and special activities. Most activities take place right after worship. Children of God of all ages are welcome!

- 11/12 Deacon Xmas cards
- 11/19 Decorate Luminaries
- 11/26 Church Advent Decorating
- 12/3 First Sunday Luncheon
- 12/10 Cookies and bags for Daybreak
- 12/17 Work Camp cookie sale
- 12/24 Fellowship (Xmas Eve!)
- 12/31 Fellowship

YOUTH GROUP NEED

Pastor Jo Marchetto, our Youth Group Director, could use some help from us here at FPC. **At times, an adult or two are needed to assist in the Youth Group activity, program.**

No experience is needed or special skills, just a genuine interest in our youth. The commitment can be flexible. Why not give Pastor Jo a call (phone number is in the directory) and find out what it's all about. You will be greatly appreciated! THANK YOU!



SUPPORT OUR YOUTH! BUT HOW?

Sponsoring a meal for our Youth Groups is a very beneficial and easy way to show your support for our youth. (For a rewarding experience, consider joining them for the meal and getting to know them better.) It's easy - scan the QR code to schedule/sponsor your meal, or you can call Pastor Jo Marchetto, our Youth Director. What a wonderful way to show interest in and support our youth! Thank you.



PRESBYTERIAN DISASTER ASSISTANCE

Scan this QR code to donate to aid disaster relief, or send a check with PDA in the memo line, mail to:

Presbyterian Disaster c/o
Presbyterian Church (U.S.A.)
P.O. Box 643700
Pittsburgh, PA 15264-3700



WORD ON WEDNESDAY (WOW)

Our Wednesday at noon Bible study is meeting again! We're continuing with the Gospel of Matthew. Reading the gospel together helps us process and learn together as we grow together. All are welcome!

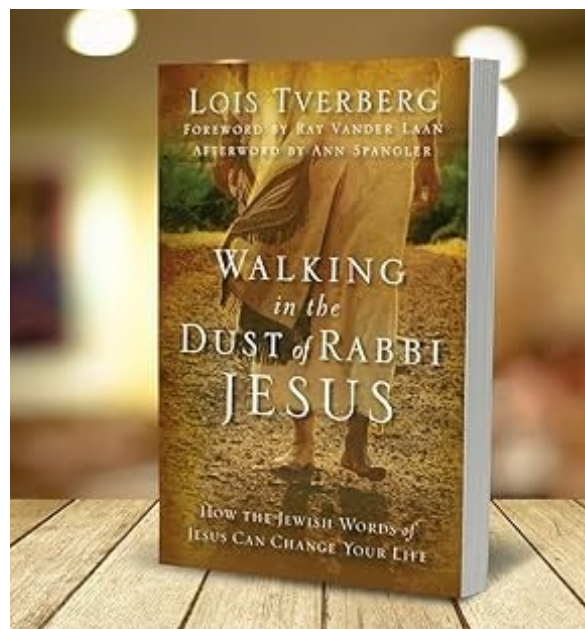


THURSDAY WOMEN'S STUDY GROUP

Fall 2023

This group meets Thursday mornings from 9:30-11:30 a.m. in the homes of our members for coffee, study, laughter, and prayer.

Join us this fall through early December as we study some of Jesus' most important words and stories in light of their Jewish context.



FELLOWSHIP HOSTS NEEDED

Everybody loves fellowship time following worship. It's a wonderful time to catch up with your church family! Hosting is easy, but we still need people to volunteer. Instructions are provided. Here are the dates where hosts are needed:



November 26, December 17 & 21

Sign up on the whiteboard in the narthex, or contact Sally Heimbach. Thank you.

WORSHIP ASSISTANTS NEEDED



You might think that assisting during worship is a bit daunting, but it is easier than you think! Spoon-fed instructions are provided, with all the necessary materials. Everything is prepared for you! Yet, as easy as it is, volunteers are always needed. Here are the dates where a worship assistant is needed:

December 3, 17 & 21

Contact Sally Heimbach. Thank you.

THE NURSERY NEEDS YOU!

We are looking for volunteers for the nursery during the worship time. If you do not have your clearances, we can assist you in obtaining them. Here are the dates where volunteers are needed:



November 26, December 3, 10, 17 & 21

Sign up on the whiteboard in the narthex, or see Heather Davis or Sally Heimbach. Thank you.

WOMEN OF FAITH



Holiday Craft Fair

December 2, 2023 9 AM to 3:00 PM

Faith Presbyterian Church
3002 N. Second Street • Emmaus, PA

Help with preparation is always needed! Many hands make light work. As we get closer to the date of the Holiday Craft fair, more help is appreciated. Crafting skills are not necessary! There are tasks for anyone. If you want to help, join Women of Faith in the brick room at the church on **Wednesdays at 9:30 a.m.**

More vendors are needed for this year. Please share with anyone who might be interested in participating! Those who want to learn more should reach out to Sue Lawall.



MISSION OPPORTUNITIES

As we approach the Thanksgiving and Christmas seasons, the Ministry to the Community has several opportunities to support local organizations.

There will be a table in the Narthex for the donations

Emmaus High School Angel Network

The Emmaus High School Angel Network has asked Faith Presbyterian Church to donate **200 cans of soup** to their holiday grocery collection. These cans will be picked up following worship on December 3.



Please consider buying cans that have pop tops, eliminating the need for a can opener.

Angel Networks help children at risk by providing basic assistance to students in need on an immediate, short term basis; supporting students' ability to focus on learning in school; and giving anonymously in the true spirit of community. They provide students with basic necessities such as EMERGENCY groceries, clothing on an individual basis, curriculum-based field trips, academic expenses, and personal need products

Ripple Church

We are a Christ-centered, community-focused church seeking to have a ripple-effect in our neighborhoods and beyond by loving ourselves, our neighbors, and one another as we live towards peace and justice in Allentown.



Charley and Helen Underwood have been volunteering at the Ripple Church, 1421 W Turner St. in Allentown, providing two meals a year during their Sunday service at 4 p.m. Their next date is January 14, 2024. Ask them how you can help.

The church is also looking for donations of hand warmers and "cup of soup" (just add water type).

Family Promise of Lehigh Valley

Family Promise of Lehigh Valley is a non-profit 501(c)3 affiliate of the National Family Promise Organization. Our mission is to assist children and families experiencing homelessness find or retain affordable housing and gain sustainable financial stability.



Here is a **wish list** of items in need:

Paper towels
Toilet paper
Feminine care products
Deodorant
Sponges

TWO WEEKS OF FAITH

This calendar is prepared on the Thursday prior to distribution.
Please see the church [website](#) for the most up-to-date information.

Key	
BR	Brick Room
FH	Fellowship Hall
MR	Music Room
P	Parlor
S	Sanctuary
Z	Zoom

NEXT WEEK

Sunday, October 29

Stewardship Sunday

- 10:00 a.m.— Worship Service: Pledge Dedication
- 11:00 a.m.— Sunday Morning Together (FH)
Church Clean-up
- 5:00 p.m.— Youth Group Halloween Party

Monday, October 30

- 7:00 p.m.— Emmaus Chorale (FH)

Tuesday, October 31

Wednesday, November 1

- 8:00 a.m.— Rotary Food Program (FH)
- 9:30 a.m.— Women of Faith (BR)
- Noon— Word on Wednesday (P)
- 5:30 p.m.— Faithful Ringers rehearsal
- 7:00 p.m.— Faithful Harmonizers rehearsal (S)

Thursday, November 2

- 9:30 a.m.— Thursday Women's Study Group
- 7:00 p.m.— Narcotics Anonymous (FH)

Friday, November 3

Church Office Closed

Saturday, November 4

- 9:00 a.m.— Zumba (FH)
- 10:00 a.m.— Crazy Quilters (FH)

NEXT WEEK

Sunday, November 5

- 10:00 a.m.— Worship Service
- 11:00 a.m.— Potluck Luncheon (FH)
- Noon— Special Session Meeting (BR)
- 5:00 p.m.— Middle School Youth Group
- 6:30 p.m.— High School Youth Group

Monday, November 6

- 7:00 p.m.— Emmaus Chorale (FH)
- 7:15 p.m.— Ministry to the Congregation Committee

Tuesday, November 7

General Election—Voting

- 7:30 p.m.— Ministry of Support Committee (P)

Wednesday, November 8

- 8:00 a.m.— Rotary Food Program (FH)
- 9:30 a.m.— Women of Faith (BR)
- Noon— Word on Wednesday (P)
- 1:00 p.m.— Garden Club Board Meeting
- 5:30 p.m.— Communications Committee (P)
- 5:30 p.m.— Faithful Ringers rehearsal
- 7:00 p.m.— Faithful Harmonizers rehearsal (S)
- 7:00 p.m.— EPNHN (P)

Thursday, November 9

- 9:30 a.m.— Thursday Women's Study Group
- 7:00 p.m.— Narcotics Anonymous (FH)

Friday, November 10

Church Office Closed

Saturday, November 11

- 9:00 a.m.— Zumba (FH)
- Noon — Outside Use (FH)

Daybreak Meal—November 13
Winter Flyer deadline—November 19
2023 Per Capita—\$48.00

ARE YOU GETTING THE INFO YOU NEED?

Faith Church has four email lists. Are you interested in being added to one or more of them? Please indicate your interest, add your email address, tear off this tab, and drop in the offering plate.

- ☐ Weekly Announcements
- ☐ Quarterly Newsletter
- ☐ Prayer Chain
- ☐ Emergency Alerts

Name & email: _____

Looking
Ahead

Mark Your
Calendars!

Nov. 19..... Winter Newsletter Deadline

Dec. 2 Women of Faith Craft Fair

Dec. 3..... Pot Luck Luncheon

Dec. 17..... Christmas Joy Offering,
Congregational Meeting
Work Camp Cookie Sale

Dec. 24..... Christmas Eve

Dec. 25..... Christmas

Jan. 1..... Happy New Year 2024!

Jan. 28..... Annual Congregational Meeting

Feb. 23 Youth Group 30 Hour Famine